

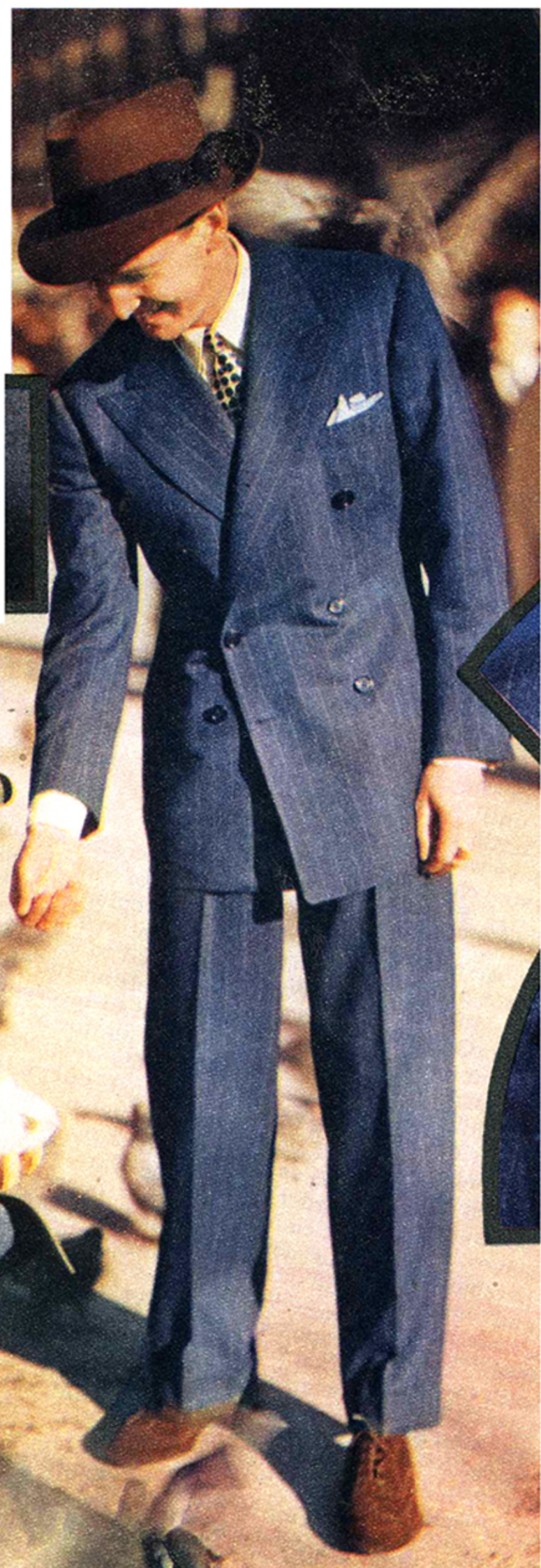
Collier's

MARCH 29, 1941

Informally Yours

By Henry L. Jackson

For pampering pigeons or any other informal town activity—the office, for instance—you won't go wrong with semi-sports clothes. The covert topcoat is casual, easy-fitting. So is the suit, a lightweight worsted flannel.



THE people who Emilypost men's cloaks and suits say it's all right now to wear your country week-end clothes to business. Within reason, of course. No play suits, no flannel shirts, no knit ties, no rope-sole shoes. But lightweight tweeds and gabardines—okay.

Informal flannel and covert suits become citified when you dignify them with the right accessories, dressy business shirts and regular town hats. There's one concession you can make, however, to the flora and fauna of East Milkstop: neckwear may be gay, colorful.

Keep the coat and pants in the same family. The odd jacket is an acceptable uniform for a station wagon, but on the hard city sidewalks, uh-uh!

The single-breasted suit is best for this semisports, double-action use. Try a Glen Urquhart pattern, with a bright overplaid, or a striped flannel. An easy-fitting suit in solid colors will give variety to your summer wardrobe.



No. 1,
blue-and-white striped broadcloth shirt, electric blue foulard tie with a white overall pattern, blue-gray chalk-stripe suit, all set off by the olive drab of the topcoat.

Informally Yours

For the cool of the evening, a covert topcoat will keep you comfortable in town or country, but be sure it's a loose, casual model—not form-fitting. And if the country air is a few degrees cooler than the city, blend a sweater into your ensemble.



No. 2, pale yellow broad-cloth shirt with navy-spotted, corn-color tie, blue-bordered handkerchief and gray-blue suit



No. 3 shows the effect of a tan Glen plaid shirt with harmonizing striped tie and foulard handkerchief, plus a natural-color lightweight wool sweater.

Informally Yours



No. 4 sets against the natural-color Shetland herringbone suit a tan-and-white candy-striped oxford shirt, a brown, red and yellow India silk tie, complementary handkerchief



Close-up No. 5, silver-gray twill shirt with blue wool tie and blue foulard handkerchief, all matching up with the gray plaid with blue overplaid.

Informally Yours



No. 6, yellow oxford shirt with white stripes, parchment tie with contrasting color, natural color gabardine suit



The young week-end loafer at the left has eased into a gabardine suit, an oxford shirt, a foulard tie and a drink on the house. The other guest is completely at ease in a Glen plaid.