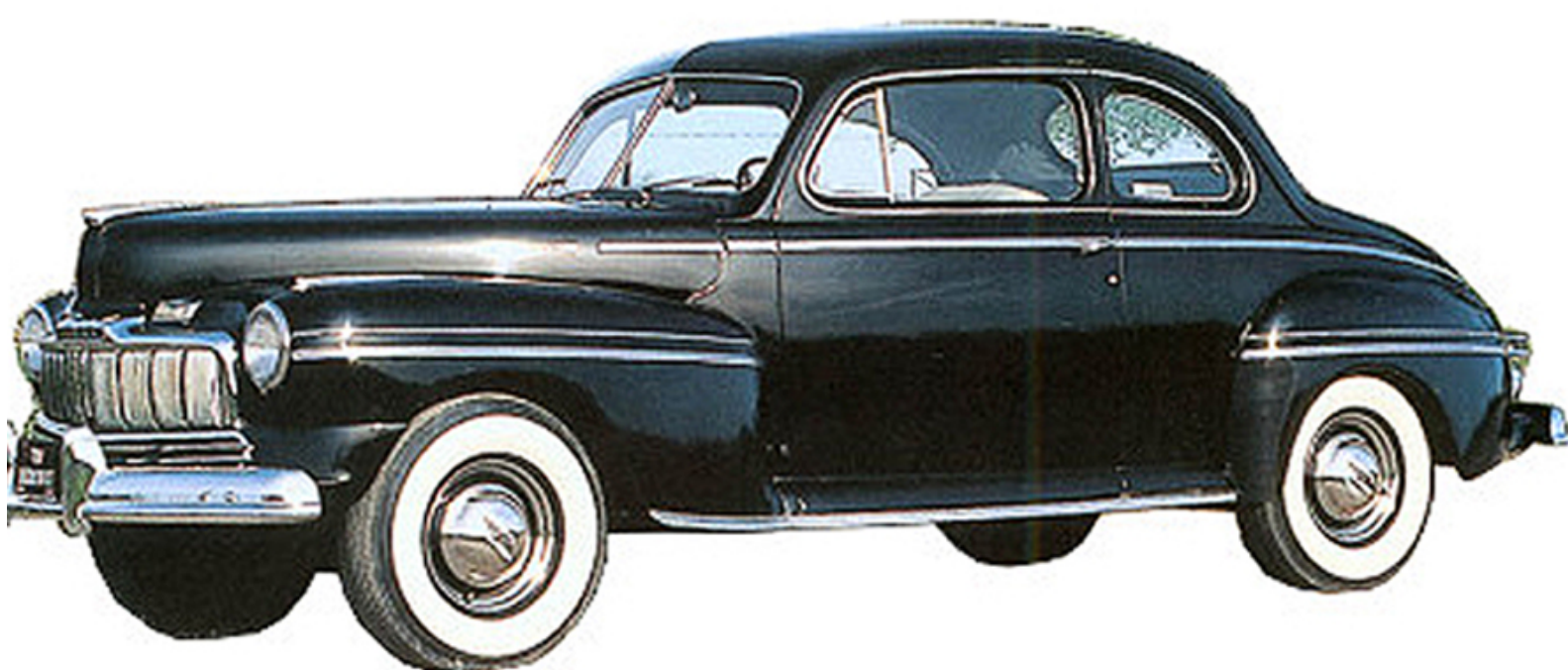


## Ford—1946 Model



### New-style rolling stock: The 1946 Ford

The first new Ford since 1942—a hand-made 1946 model—appeared last week. The company proudly showed off its heavy front-end grille, redesigned interior trim and hardware, improved springs, crankshaft bearings, and lubrication system. Nothing was said about price.

Ford expects to start assembly-line production around Aug. 1, and to turn out 40,000 cars by the end of the year under government quota. This means none will be available this year for the average motorist.

Tractors will be sleek, too. The B. F. Goodrich Co. is testing an endless rubber track on an experimental Cletrac model that has a strong, uniform pull and gives the operator a smooth ride.

# Newsweek

JUNE 11, 1945

[OldMagazineArticles.com](http://OldMagazineArticles.com)