

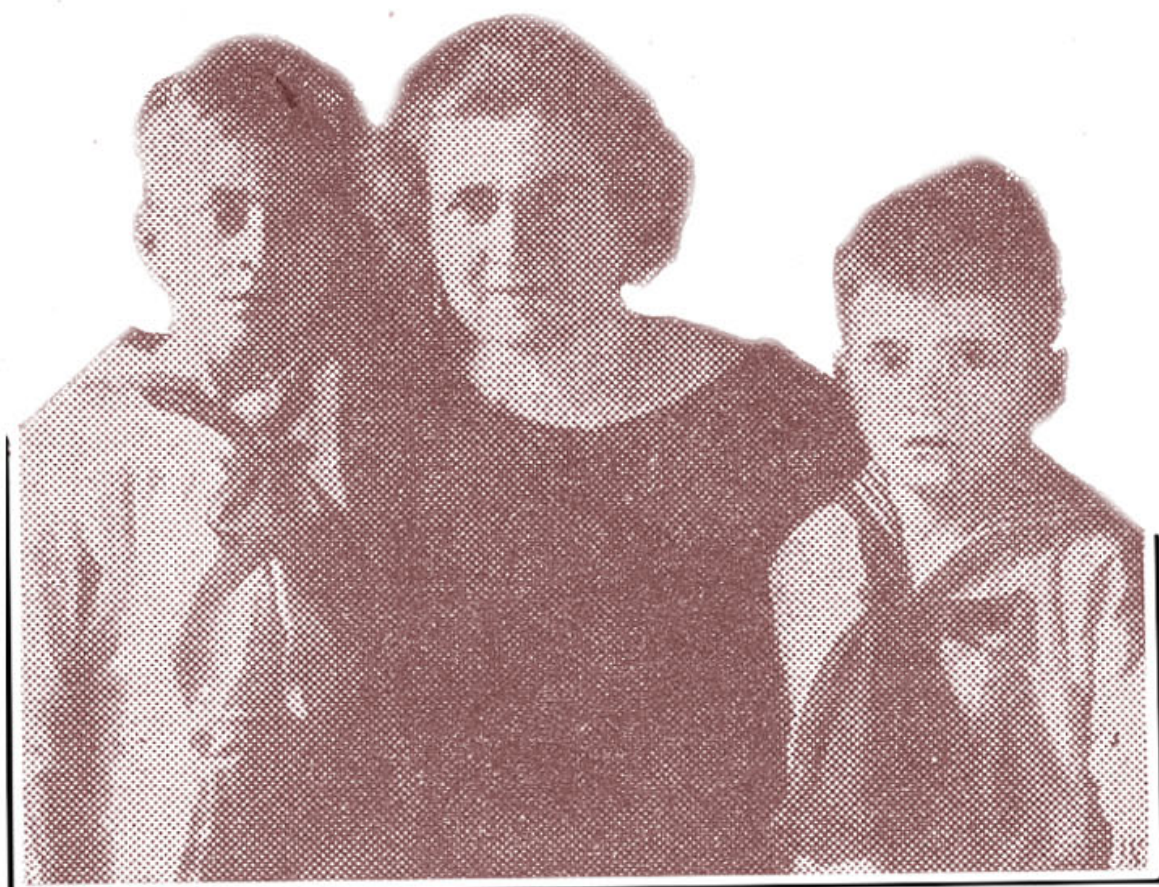
PATHEFINDER

DIGEST OF  WORLD AFFAIRS

October 26, 1935 *p. 13

PERSONALITIES

Unlike the Empress of Ethiopia whose name is constantly in the public prints and as constantly linked with the Emperor's, Signora Mussolini is almost unknown to the world at large and even to Italy. Il Duce has seen to it the Signora remains in the background, concerning herself only with



An early picture of Mrs. Benito Mussolini and two of her youngest sons.

household matters in contrast to the affairs of state the Empress delves in. She is rarely photographed, takes almost no part in social or official life, and completely ignored the critics who said she was of peasant stock and a former laundress who had gone barefoot most of her life. Il Duce's wife, Donna Rachelle as she is known, has a waistline far from a perfect 36, is short, has wavy hair and a kindly motherly look about her.