

Vanity Fair: October, 1914

Ten of the Feminine Colonels in Europe's Royal Families



Queen Sophia of Greece, until the war, Col. of Prussian Grenadier Guards



The Princess August William of Prussia, Col. of the Fourteenth Dragoons



The Crown Princess of Roumania, Col. of the Fourth Roumanian Hussars



The Czarina, who is a Colonel in no less than four Russian Regiments



The Duchess of Brunswick, the only daughter of the Kaiser, Col. of the Death's Head Hussars



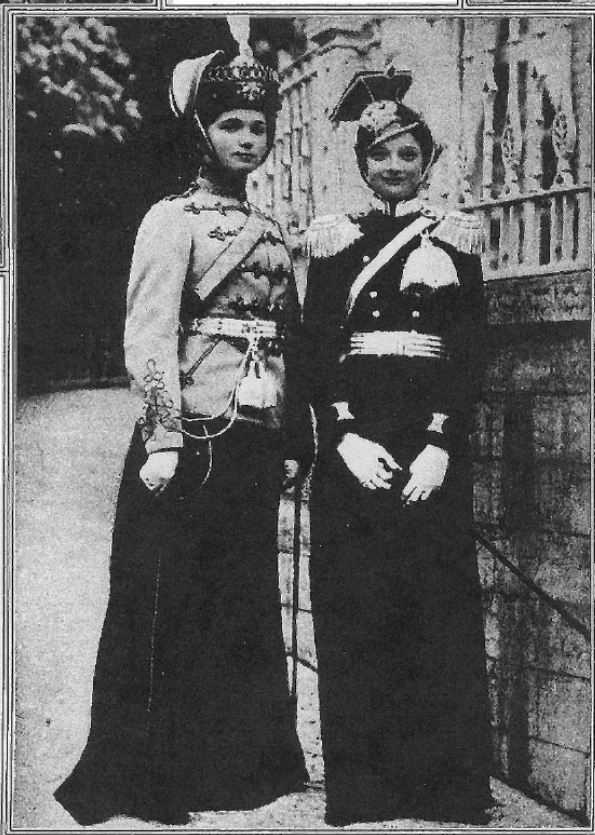
Princess Eitel Frederick, wife of the Kaiser's second son, Col. Prussian Dragoons



Grand Duchess of Mecklenburg-Schwerin, Col. of the Mecklenburg Dragoons and Imperial House Guards



The Crown Princess Cecile of Germany, Col. of the Second Prussian Dragoons



The Grand Duchess Olga (left), Col. of the Elisabethgrad Hussars, and Grand Duchess Tatiana (right), Col. of the Vossnessenk Lancers

Several of the Royal and Imperial women in Europe, who are possessed of military rank, have lost their colonelcies in foreign regiments by the World War. Thus, the Czarina and the Russian Grand Duchesses, as well as Queen Mary of England, have been deprived of their commands in the Kaiser's army. It is a remarkable fact that of the Royal and Imperial "colonels in petticoats" shown above, nine are in the line of succession to the throne of Great Britain, the tenth, Crown Princess Marie of Roumania, a granddaughter of Queen Victoria, having forfeited her rights by marrying a Roman Catholic, in direct violation of the British Constitution.

Queen Sophia of Greece is a daughter of the late Emperor Frederick. The Princess August William is the wife of the Kaiser's fourth son. Crown Princess of Roumania is a granddaughter of Queen Victoria, through her father; the late Duke of Edinburgh. The Czarina is a sister of Princess Henry of Prussia. The Duchess of Brunswick's marriage reconciled the former reigning House of Hanover with that of Prussia. The Grand Duchess of Mecklenburg-Schwerin is a daughter of the Duke of Cumberland, a Princess of the reigning house of England. Germany's Crown Princess was, on her marriage, invested with a rank superior to that of her husband, who was then only a major.