

1918



HELMET

MATERIAL—2 balls or 1 hank
Fleisher's Knitting Worsted, gray
or khaki. Pair amber needles
No. 3½, 4 steel needles No.
3 (sometimes called No. 11
steel).



Stitch No. 102.

With amber needles, cast on 54 stitches, knit plain 10 inches for front and slip off on spare needle. Work another piece to correspond 5 inches long for back.

Slip the stitches of both pieces on to 3 steel needles, having 36 stitches on each needle. Knit 2, purl 2, for 5 inches. Bind off 30 stitches *very loosely* to make the opening for the face. Knit 2, purl 2, forward and backward for 13 rows.

Cast on 30 stitches *loosely*, and on 3 needles knit 2, purl 2, for 2½ inches. Knit 1 round plain, then narrow by knitting the last 2 stitches on each needle together, every row, until there are 8 stitches left on each needle. Then knit 2 stitches together all around, leaving 4 stitches on each needle. Then draw the loop of the yarn through all 12 stitches with a crochet hook and fasten firmly. Knit rather snugly.

OldMagazineArticles.com

FLEISHER'S

HELMET

KNITTED ON TWO NEEDLES

MATERIAL—2 balls or 1 hank
Fleisher's Knitting Worsted, gray or
khaki. 2 amber needles No. 5.

The helmet is made in two parts, which are afterwards sewed together.

FRONT OF HELMET—Cast on 48 stitches and knit even for 50 rows (25 ridges). The work should measure 11 inches across and be 5½ inches in depth, when laid flat without stretching.

Next row; knit 2, purl 2, and repeat to the end of the row. Repeat this row until the ribbed portion measures 6 inches in depth.

On the next row the opening for the face is to be made as follows: knit 2, purl 2, for 12 stitches; place stitches on a separate needle. Knit and bind off the next 24 stitches, and on the remaining 12 stitches knit 2, purl 2 in pattern. Repeat for 12 rows (2 inches).

Fasten off the yarn, so that the work will not rip. Go back and fasten yarn where the binding off was begun, pick up the 12 stitches on separate needle and work 12 rows, as before, keeping the stitches on which the first 12 rows have been worked on the pin.

Then cast on 24 stitches to replace those bound off, work across the 12 stitches held on the pin. Make 4 more inches in ribbing.

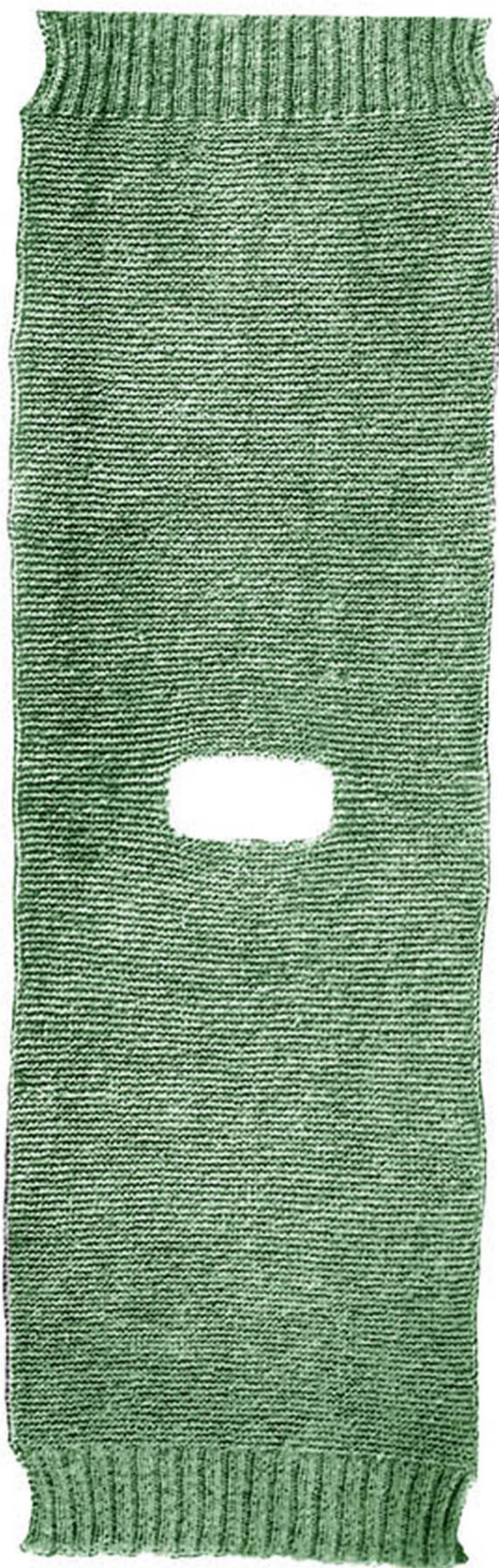
TOP OF HELMET—Knit 2, narrow (by knitting 2 stitches together), knit 14, narrow, knit 14, narrow, knit 12. Every other row is to be purled. On the third row, knit 2, narrow, knit 13, narrow, knit 13, narrow, knit 11.

Continue to work in this way, narrowing on each knitted row, in the three places with one stitch less between narrowings until there are 9 stitches left. Purl back, then bind off.

BACK OF HELMET—Work in the same manner as for front, omitting the face opening. Sew up the side seams, leaving the plain knitting at shoulders open. Strengthen the face opening with a round of single crochet stitches.

(continued)

FLEISHER'S



JACKET

MATERIAL—5 balls or
2½ hanks gray or khaki
Fleisher's Knitting Worsted.
1 pair of amber needles
No. 5.



11 stitches = 2 inches. 11 ridges = 2 inches.

Stitch No. 102.

Cast on 80 stitches.

Knit 2, purl 2, for 4 inches.

Knit plain until jacket measures 25 inches.

Knit 28 stitches.

Bind off 24 stitches for neck.

Knit 28 stitches. On these knit 5 ridges or
10 rows.

Pick up 1st 28 stitches and knit shoulder same
as the 1st.

Cast on 24 stitches.

Place all stitches on 1 needle.

Knit 21 inches even.

Knit 2, purl 2, for 4 inches.

Sew up seams, leaving 9 inches for arm-holes.

Make 2 rows of single crochet around opening
for neck and 1 row around arm-holes.



WRISTLET

MATERIAL—1 ball or
½-hank gray or khaki
Fleisher's Knitting Worsted.
1 pair amber needles
No. 3.



9 stitches = 1 inch. 10 rows = 1 inch.

Stitch No. 102.

Cast on 52 stitches..

Knit 2, purl 2, for 12 inches.

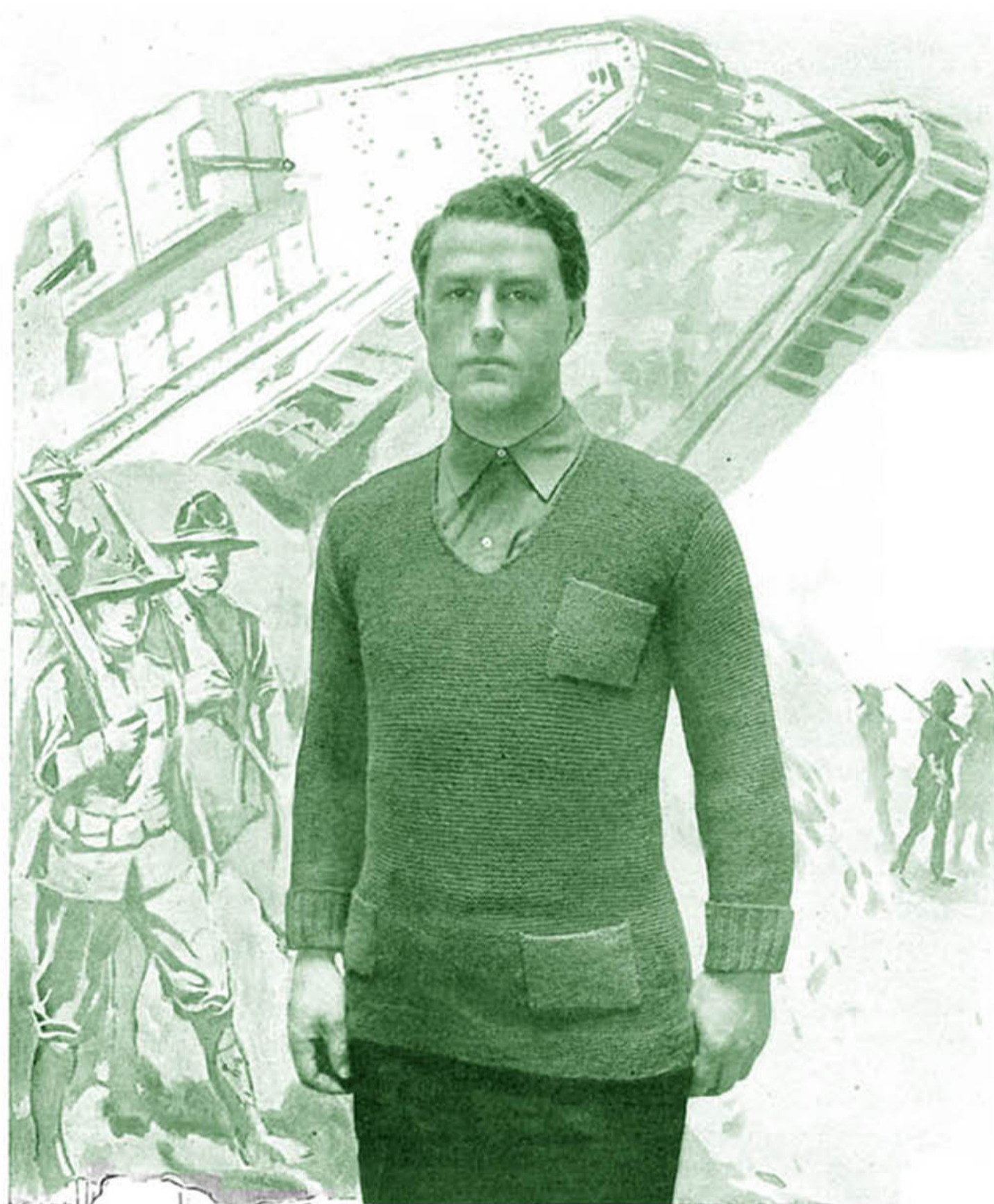
Sew up, leaving slit for thumb 2 inches long,
inches from each end.

This permits the wristlet to be reversed whe
the exposed end begins to wear.



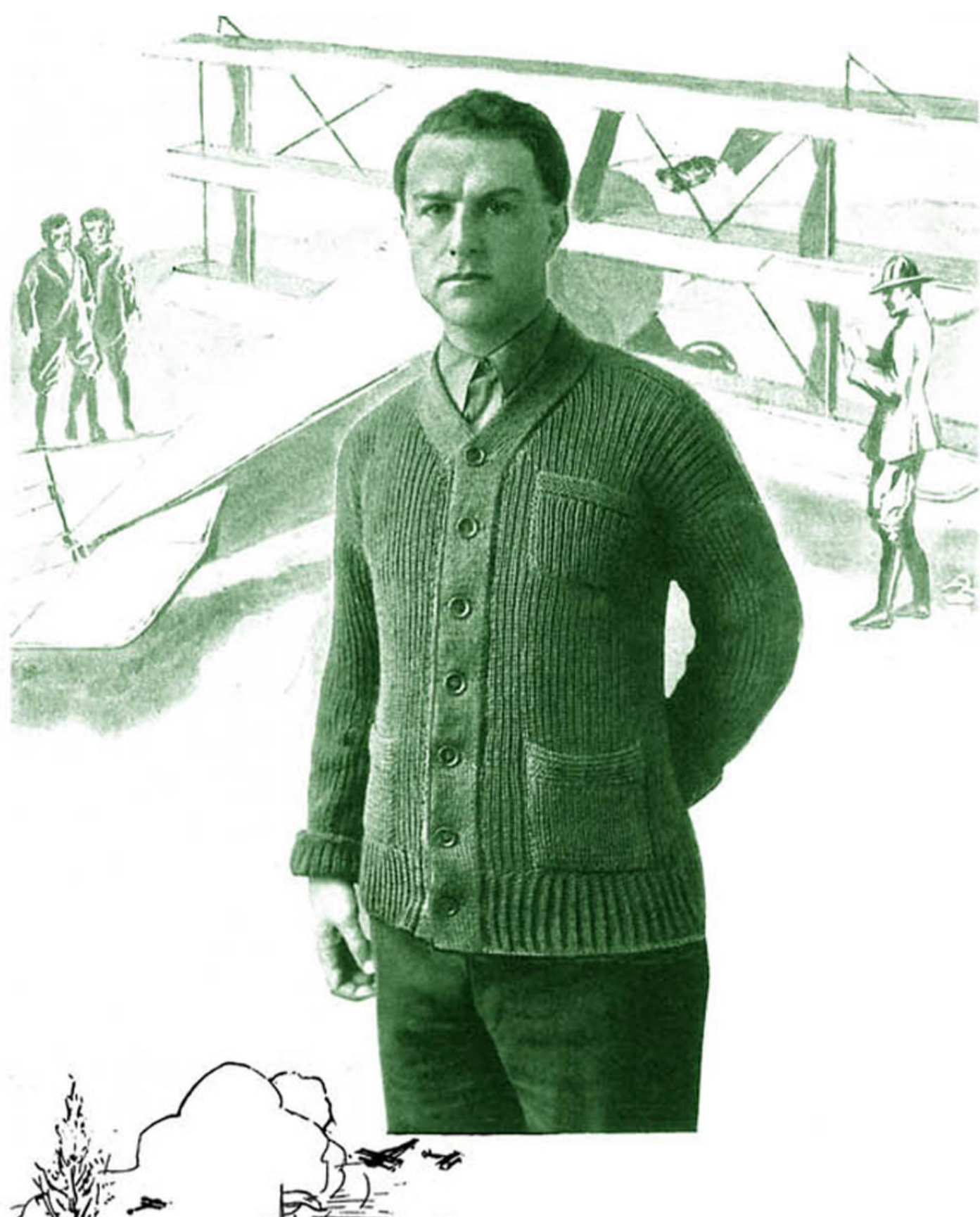
FLEISHER'S

SERVICE SWEATER.



OldMagazineArticles.com

FLEISHER'S



OldMagazineArticles.com