

# THE THRESHER

## TRENCH COAT

Officially brought to the notice of OFFICERS COMMANDING CORPS of the British Expeditionary Force.

A coat that serves as a Rain-coat, Great Coat, British Warm, and when fitted with blanket lining (see page 28) an Emergency Sleeping Kit.

July 17th, 1916.

Your Trench Coat which I bought about a year ago continues to be satisfactory, and with the sheepskin lining is superior to the leather clothing issued to officers of the R.F.C.

Capt. \_\_\_\_\_  
Seaforth Highlanders,  
attd. R.F.C.

January 27th, 1917.

Enclose cheque . . . The Trench Coat has done well, and I think you have received a good many orders from this Force from officers who have asked my opinion on it.

Capt. \_\_\_\_\_  
H.Q. 8th Brigade,  
Mesopotamia E.F.

May 23rd, 1916.

Last night we had a tropical thunderstorm for over four hours, and your coat kept me quite dry.

Lt.-Col. \_\_\_\_\_  
Manchester Regt.



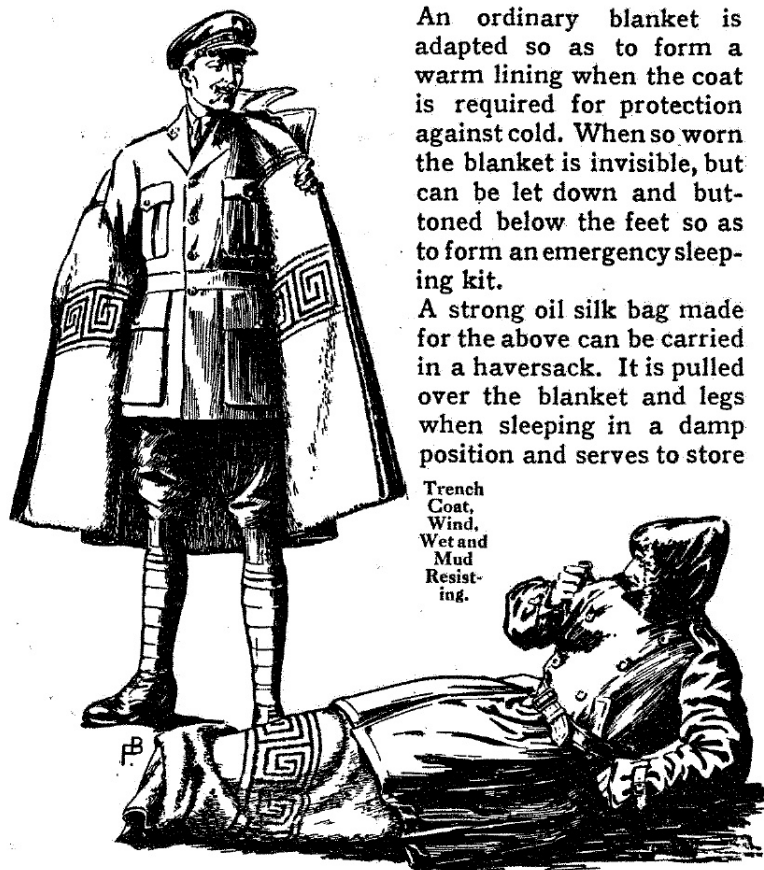
## THE TRENCH and CAMPAIGN COAT

With detachable CAMEL HAIR BLANKET LINING.

An ordinary blanket is adapted so as to form a warm lining when the coat is required for protection against cold. When so worn the blanket is invisible, but can be let down and buttoned below the feet so as to form an emergency sleeping kit.

A strong oil silk bag made for the above can be carried in a haversack. It is pulled over the blanket and legs when sleeping in a damp position and serves to store

Trench  
Coat,  
Wind,  
Wet and  
Mud  
Resist-  
ing.



As an Emergency Sleeping Kit.

the blanket when not in use as a coat lining. The advantage of a detachable hood makes the sleeping kit complete.

Coat and Blanket complete	... £6 16 6
Detachible Hood	... 0 12 6
Oil Silk Leg Bag, Reinforced	...
Drill	... 0 17 6