

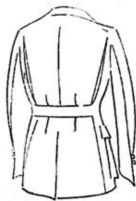
Vanity Fair: April, 1922

Ready-to-wear Sport Models for Spring and Summer

Showing Some Distinct Features by the Designers of the Ready-to-wear



STEIN - BLOCH has a very interesting model in "Golfing." Note the full knickers with pleats at the waistline in front. This is a new and practical feature of several of the season's models. The sleeve is set into a pivot arm pit which is a very interesting and practical idea, and has been beautifully worked out in this model



THE HOUSE OF KUPPENHEIMER has developed a sport jacket called "Roslyn" which is a two button well shaped coat with four pouch pockets and flaps. The back of this jacket is very interestingly designed with a yoke and an inverted pleat which runs from the point of the yoke to the bottom of the jacket. It is held in at the waist by a half belt and the invert of the pleat gives the necessary play to the skirt of the jacket



HART, SCHAFFNER & MARX combine several new features in their two sporting models. At left No. 732, at right No. 731. The jacket at the left has four square patch pockets, the lower two are telescopic to allow of all the usages that sport jacket pockets may be put to, and the back of this jacket has two inverted pleats at the side seam and an open vent in the skirt. The jacket to the right (No. 731) has the same inverted pleats with an additional one in the skirt in place of a vent. Only one breast pocket and two rounded patches

OldMagazineArticles.com