

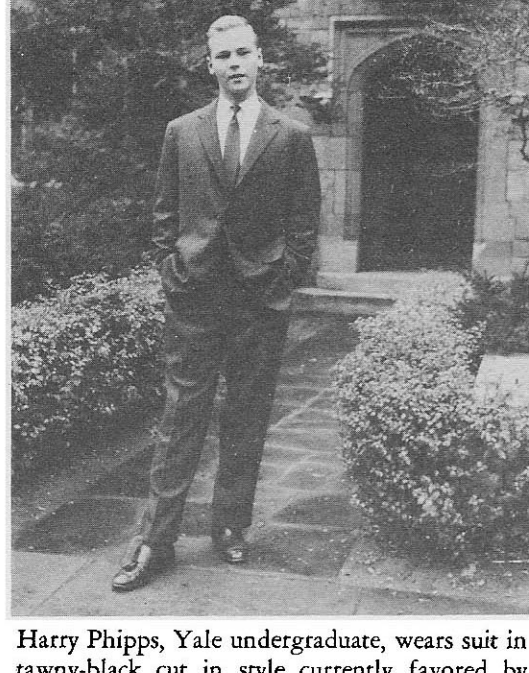
FASHIONS CUM LAUDE

...for the undergraduate

some of the newer items of apparel

young men will want to consider

in preparing their back-to-college wardrobes.



Harry Phipps, Yale undergraduate, wears suit in tawny-black cut in style currently favored by young men. Accessories equally well liked and worn here. . . . the Oxford button-down collar shirt; narrow-shape tie in ancient madder colors; tassel-moccasin slip-on shoes in antiqued brown.




Tawny-black sport coat fashioned by Currick & Leiken from the Rumson tweed sampled on the opposite page. Coat carries such details as leather buttons, patch pockets, wide stitching at the lapels, moderately natural shoulders and body lines, and unseen center vent at back.



The new four-button suit in tawny-black tailored by Grieco Brothers from wool cheviot. This garment features the soft construction and natural lines demanded today by better dressed college men. Same color and fabric can also be had in popular, more conventional three-button model.



Tawny-black has strong appeal in topcoats, as evidenced by the garment shown in this candid shot taken at Princeton. The coat, slightly longer than knee-length, has natural shoulders, non-fitted body, flapped pockets, fly-front . . . and is indicative of one of the favored models.



TAWNY-BLACK

... with yellow or black
to accessorize it:

Sampled above . . . this new color in Rumson tweed, from the quality looms of Continental Mills . . . used exclusively in the Currick & Leiken sport coat which is pictured and described on opposite page.

A new color . . . a smart color . . . an easy-to-wear color that university men take the lead in sponsoring. Like black-grey flannels, natural camel hair, and covert cloth, which saw their popularity initiated by college men, tawny-black is destined to take its place as a basic color in the wardrobes of young men. As illustrated on these pages, it is used in virtually every major item of apparel. It will be at home on any campus, anywhere. Gentry suggests as the most compatible colors to accessorize it . . . vivid yellow . . . stark black. A few typical examples are shown here.

Basic fashions . . . the cashmere sleeveless pullover, in black . . . and Argyle sox, yellow and black in design. Both quality knits from Forstmann Knitwear.



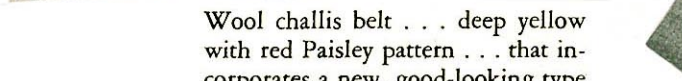
A yellow odd vest of lightweight flannel with green embroidered motifs on lapels and pockets. Styled by Currick & Leiken with gold metal buttons embossed with clover leaf.



For the first time . . . charcoal-grey in an India whipcord type of material, used by Chipp in these narrow-proportioned slacks. Recommended for wear with coat of tawny-black.



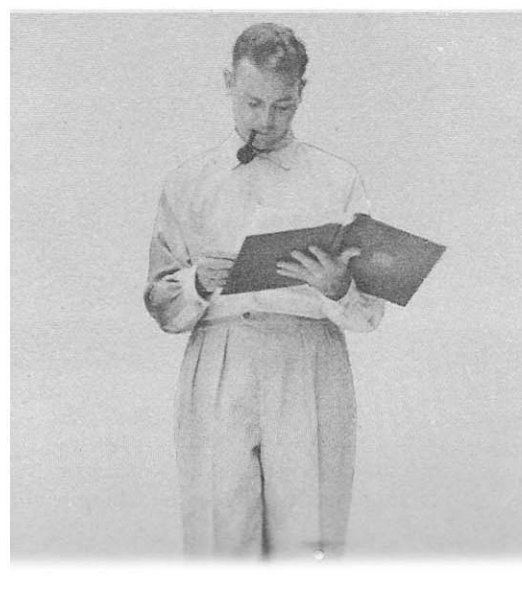
Wool challis belt . . . deep yellow with red Paisley pattern . . . that incorporates a new, good-looking type of ring buckle designed by Chipp.



High fashion as seen at Palmer Stadium, home of the Princeton Tiger . . . a bold houndstooth check topcoat in raglan sleeve model, with matching hat in unusual, very small sport shape.



For dorm or fraternity house loafing . . . a lightweight corduroy study-suit. Though resembling an ensemble of separate shirt and slacks, it is actually a one-piece suit designed for comfort.



Basic at Yale . . . or at any school . . . black-grey flannel suit, tattersall check vest, striped rep tie, button-down collar Oxford cloth shirt, grain leather bluchers in reddish antiqued brown.



For on-campus daytime activities . . . corduroy slacks in a new narrow shape and with pocket detail reminiscent of frontier trousers. The woolly sweater is a favorite of many undergrads.



FASHIONS CUM LAUDE

On these two pages . . . clothes and accessories for the autumn. Some are shown as they will be seen in shops and stores this season . . . others as recorded in candid shots in places where undergrads gather.



A group of students from the Universities of Virginia and South Carolina reflect sportswear choices of college men everywhere. They include: vertical patterns and checks; side-vented three-button models; with flapped pockets in sport coats; black-grey flannel slacks; pinned or button-down collar-attached shirts.



Metal buttons in gold color embossed with university crest . . . for use on blazers or odd coats. J. Press of New Haven has had them made for Yale, Harvard, Princeton, Dartmouth, and the University of Virginia.



Featuring attached tab collar on a white broadcloth dress-up shirt, by J. Press.

Left: The definite-check shirt (button-down collar) and matching small shape cap. Particularly smart in black and white pattern to ensemble with tawny-black. **Center:** The hand-fashioned woolly sweater in black that hangs loose and has a high-fitting crew neck. By Lord Jeff, it is made from a blend of wool and nylon yarns. **Right:** From Jaeger of London, wool ankle-length sox that feature multicolor giant dots on deep color grounds. And . . . a favorite hosiery style: regulation-length ribbed wool sox that are shaggy in texture. Knitted in England by Jaeger, they are especially smart in black . . . available in many other colors.

