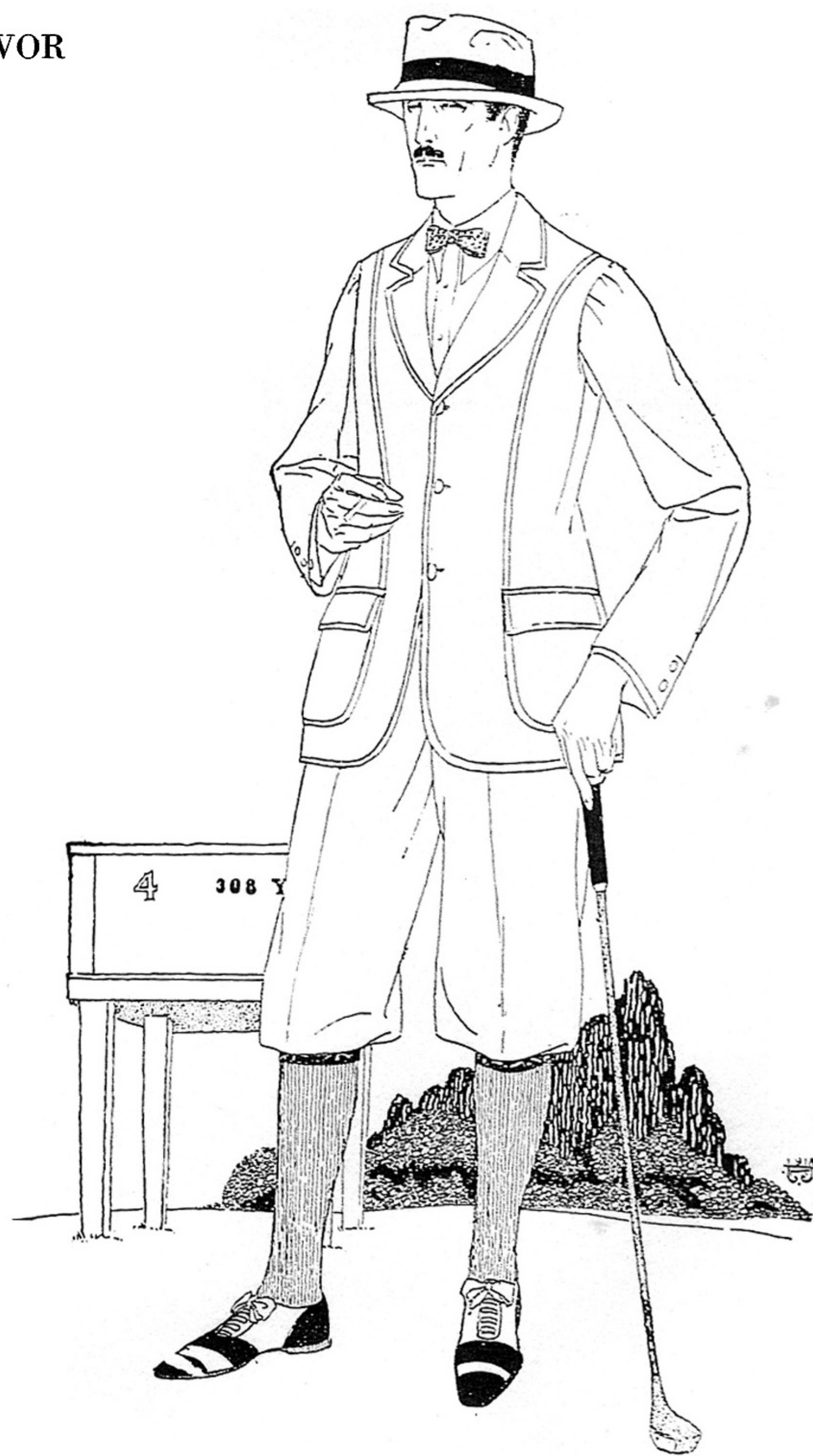
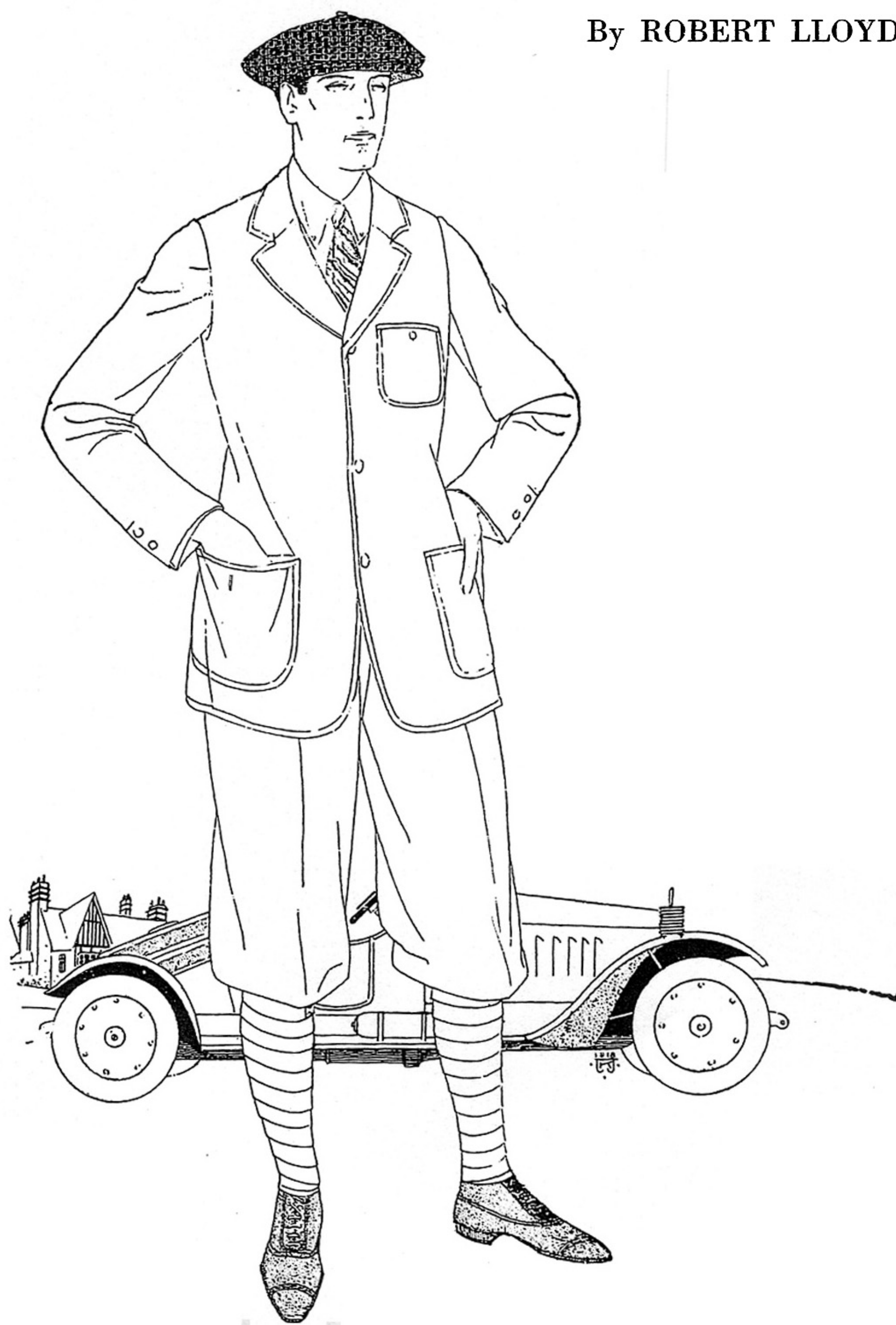


Vanity Fair; June, 1918  
**For the Well Dressed Man**  
*Clothes and Accessories for the Great Out-doors*

By ROBERT LLOYD TREVOR



**Brown twillet single-breasted jacket with waistcoat. Bag knickerbockers. Cotton twillet puttees. Brown lace boots. Cap of light weight Shetland homespun. Soft flannel shirt and collar**

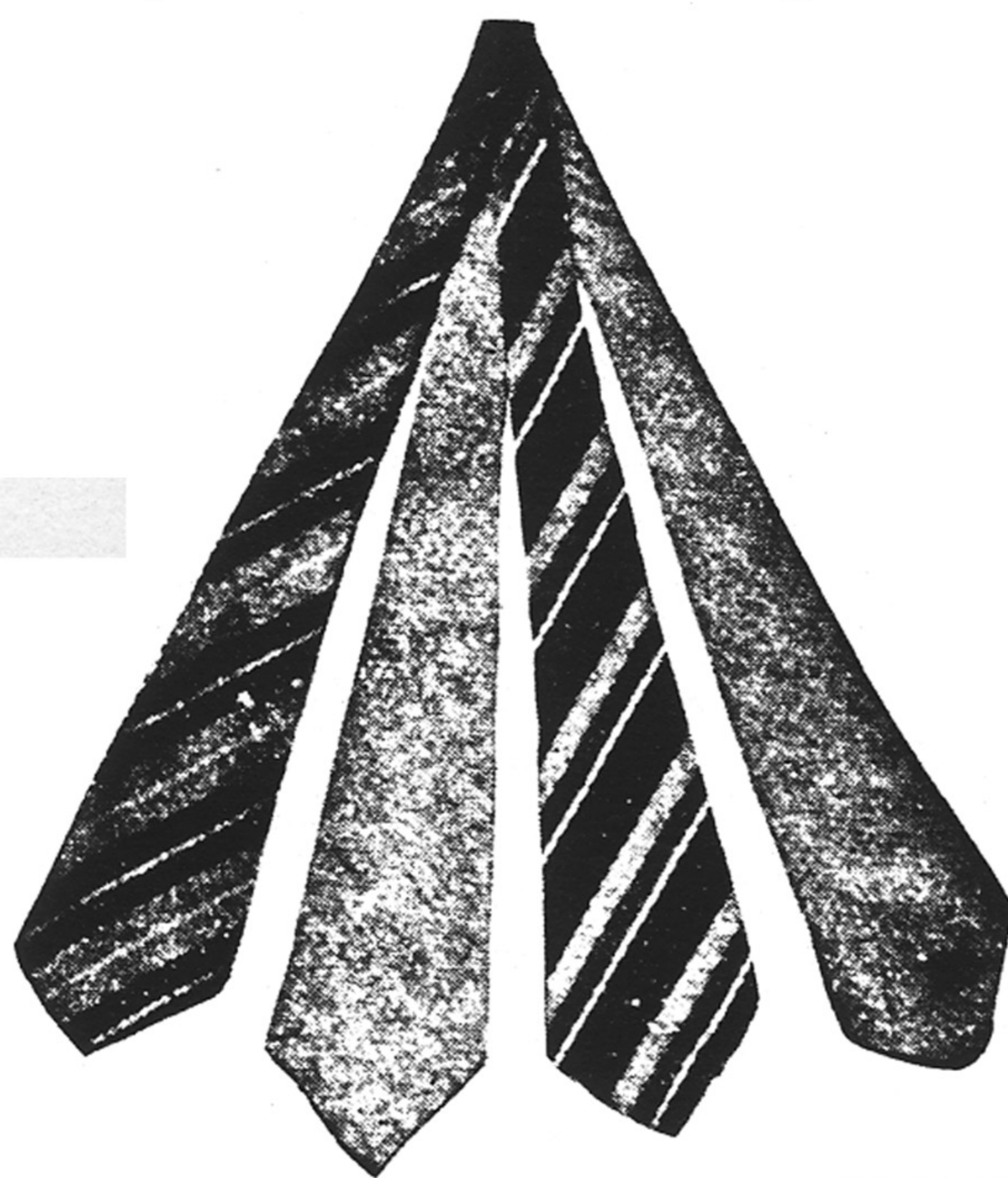
**Brown linen jacket and knickerbockers. Jacket with large side pockets and two breast pockets in the seams that curve over the shoulders. Brown wool stockings. White shoes. Leghorn straw hat**

**F**OR summer golf, a very comfortable form of suit is made of brown linen. This has the advantage of being cool and of very light weight. An example of this suit which is shown in these pages is made with a single-breasted jacket with large side pockets and with two pockets in the seams which curve up over the shoulders. Knickerbockers are made to match and have a strap at the knee. Woolen stockings of fairly heavy weight will be found the most comfortable and may be had, of course, in many colors and patterns.

Golf shoes are important accessories for the true enjoyment of the game. They should be comfortable and at the same time give a firm stance to the player. In one of the shoes illustrated in this issue there is an interesting patented modification at the instep which makes it very flexible at this point and thus enables the player to turn freely during the swing without any temptation to move his feet and probably spoil his shot. These shoes are nailed at both sole and heel. They may be had either in ankle height or as low oxfords. A soft shirt is, of course, an essential for comfortable golfing, and flannel will be found to be a very desirable material.

A cap of Shetland homespun, a soft hat which will stay on the head well, or a hat of leghorn straw made in Homburg shape, may be used to advantage for the golf links. The latter type of hat has the advantage of extreme light-weight and is not tiring to wear for a considerable period of time. In its selection, care should be taken that it is of such a kind that it can be well pulled down in case of a high breeze. This material, as well as the lighter straws of the panama type, will be used very extensively this season.

**O**F course, there is an infinite variety of specialized costumes from which to choose one's sporting clothes, but there can be no greater mistake than to simply rely on a heterogeneous collection of old garments on the theory that anything is good enough to play a game of golf in. This theory undoubtedly exists still in this country, but we have learned so much of an opposite kind from our British cousins, that it is actually exemplified less and less. It is certainly a distinct mistake to look upon the sporting tailor who specializes in clothes for particular forms of out-door life, as unnecessary in the scheme of things.



Plain colored crepe de chine scarfs, \$1.00 each.  
 Striped Irish poplin scarfs; price, \$1.50 each